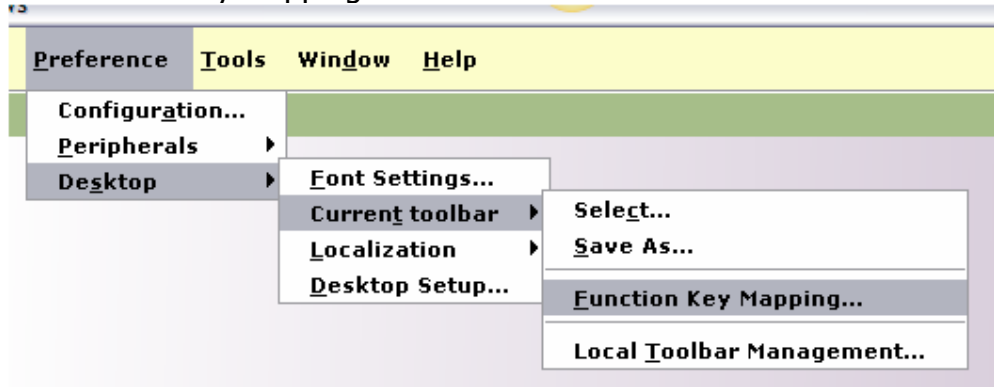
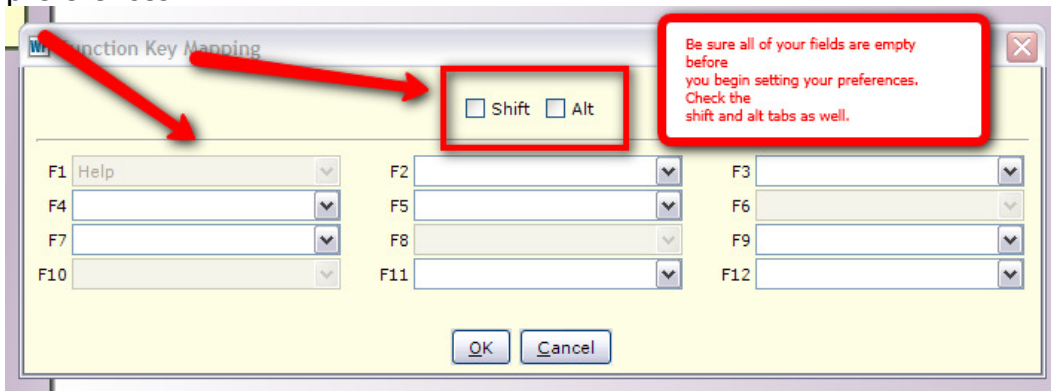


Setting Your Function Keys

Step 1: From the top toolbar in Circulation select Preference -> Current toolbar -> Function Key Mapping.



Step 2: Ensure all of the fields are empty before setting your Function Key preferences.



Step 3: Set your Function Keys as follows:

- F2 – Display User
- F3 – Renew User
- F4 – Renew Item
- F5 – Check Out
- F9 – Item Search and Display
- F12 - Discharging

